

Sanctuary IP Camera How-To

The general theory of which shot to use is: Make watching feel like being there.

This is the only view that someone not there is going to see, so give the viewer a feel for the room with wide shots. Use 1H:House Wide when there is not a specific person or group talking or performing. ALWAYS use the wide shot for anytime the congregation is standing.

The one grey area is during responsive readings. Generally, I use the shot on the lectern.

Pre-Service Procedure

1. Turn on Rack (key-switch, two clicks)
2. Turn on both computers. (open left-hand door, push power button on each.)
3. There is no log-in on either computer.
4. To switch between computers, press Scroll Lock on keyboard twice in rapid succession.
- 5.

Sanctuary IP Camera defined shots:



1H:HOUSE WIDE

Use this shot for all congregational participation. Any time that there is not a specific person talking in the choir/pulpit area.

Prelude. Hymns. Apostles Creed. Postlude. Any of the Offerings that are taken.



2:LECTERN

Use this shot when someone is speaking from the Lectern.



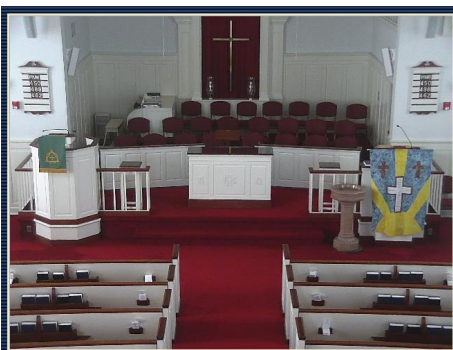
3:CHOIR

Use this shot when the choir is singing.



4:PULPIT

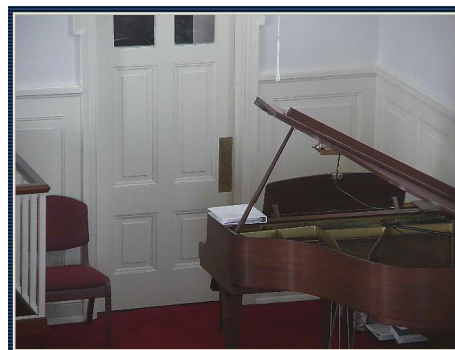
Use this shot when someone is speaking from the Pulpit.



5:DUAL

Use this shot as a transition shot between 3.choir and 2.lectern or 4.pulpit, in order to make the transition less jarring.

Also if you don't know what's happening next, you can see most of the front, and it gives the viewers a chance to orient themselves. You can see someone walking up to the lectern, and switch to 2.lectern when they arrive.



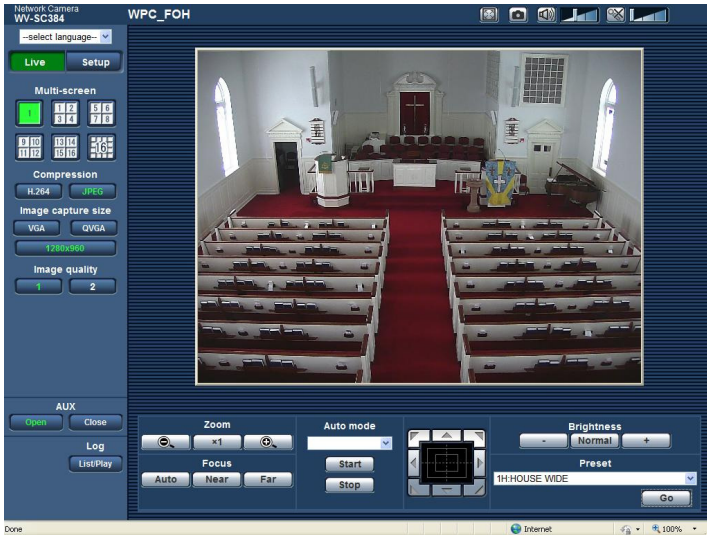
6:PIANO

Use this shot for a performer at the piano, like a singer or solo instrumentalist.

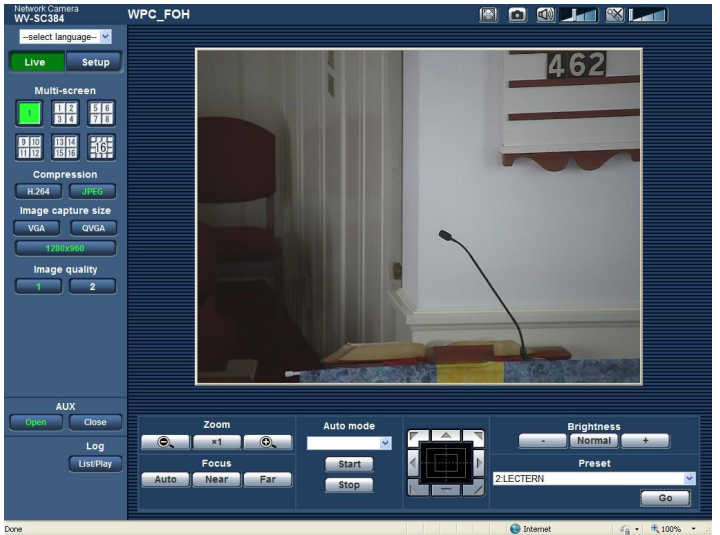
(Hint: Vera does NOT like to be zoomed in on during the service.)

Prelude, Postlude, Offertory, are not about the pianist. They are about the worship by the congregation. Use the wide shot for those elements.

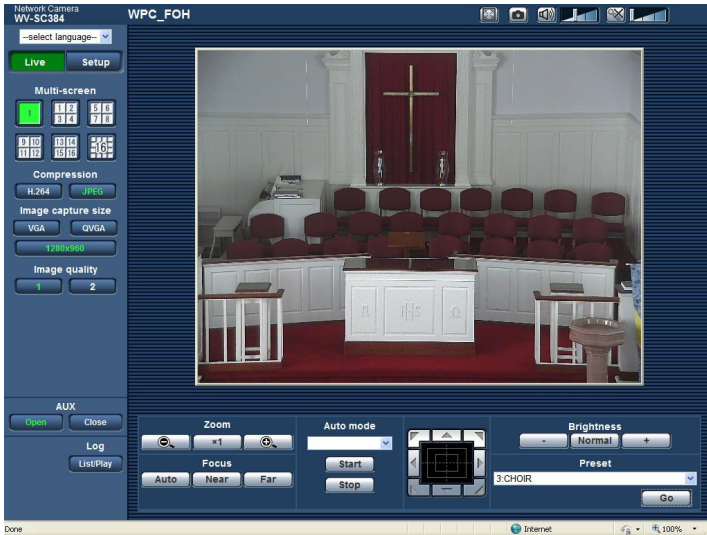
Sanctuary IP Camera defined shots:



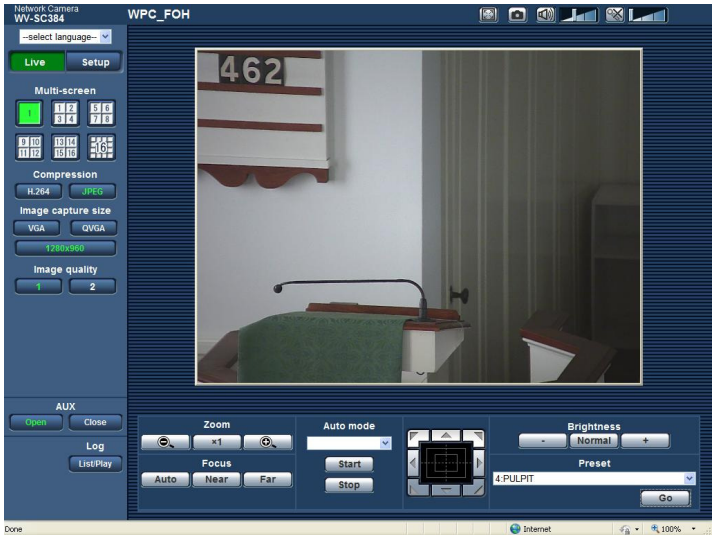
1:HOUSE WIDE



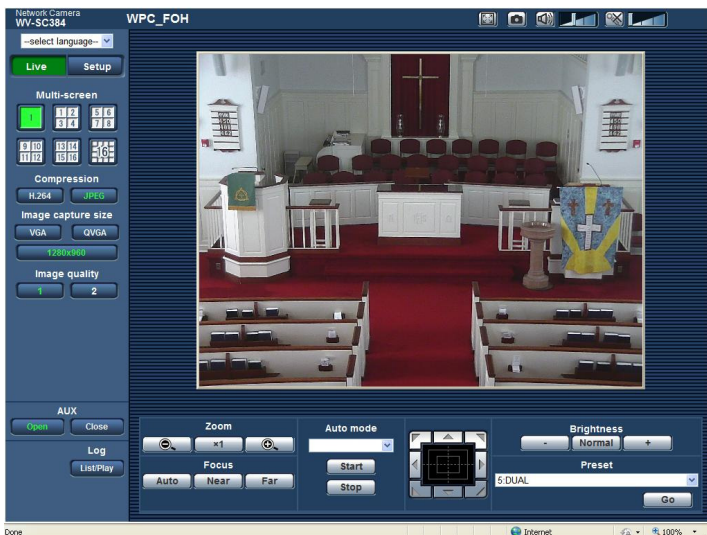
2:LECTERN



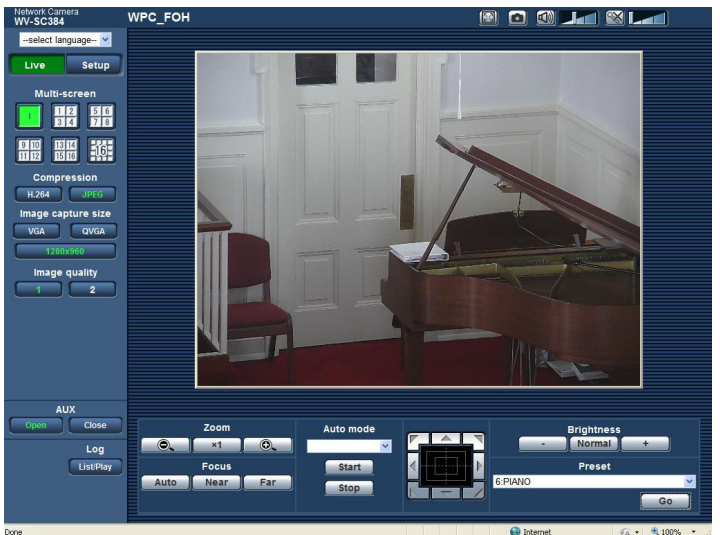
3:CHOIR



4:PULPIT

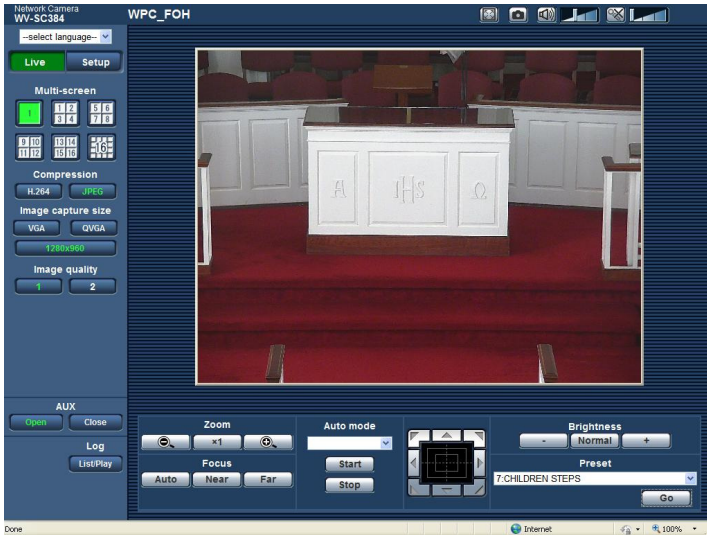


5:DUAL

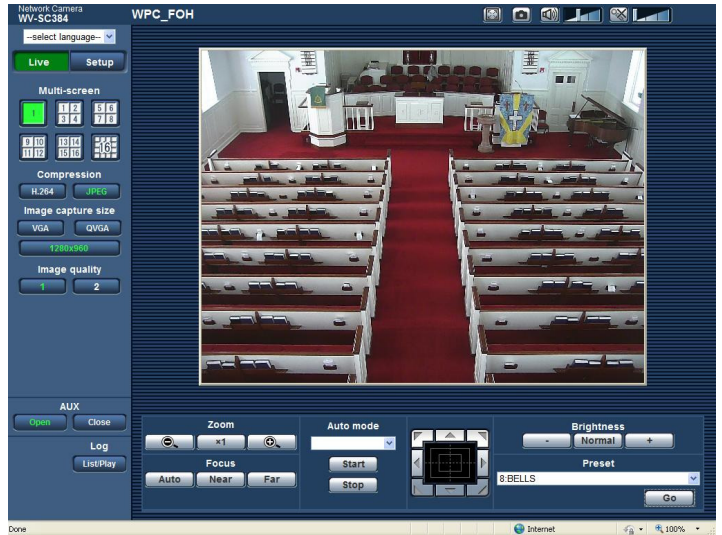


6:PIANO

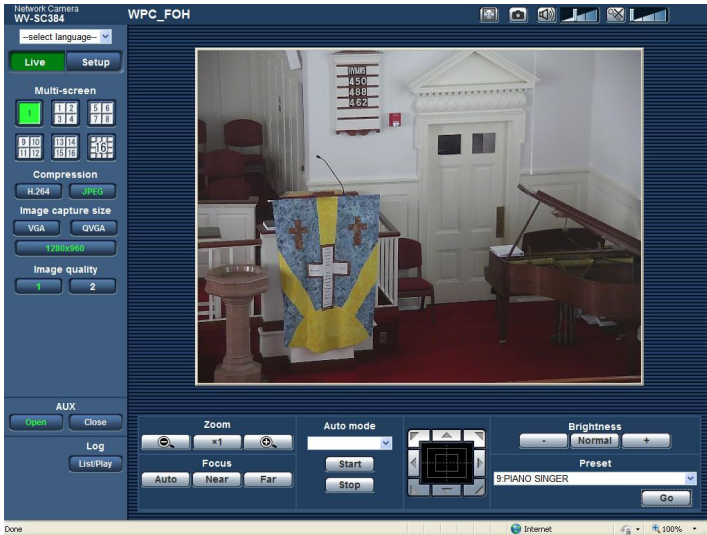
Sanctuary IP Camera defined shots:



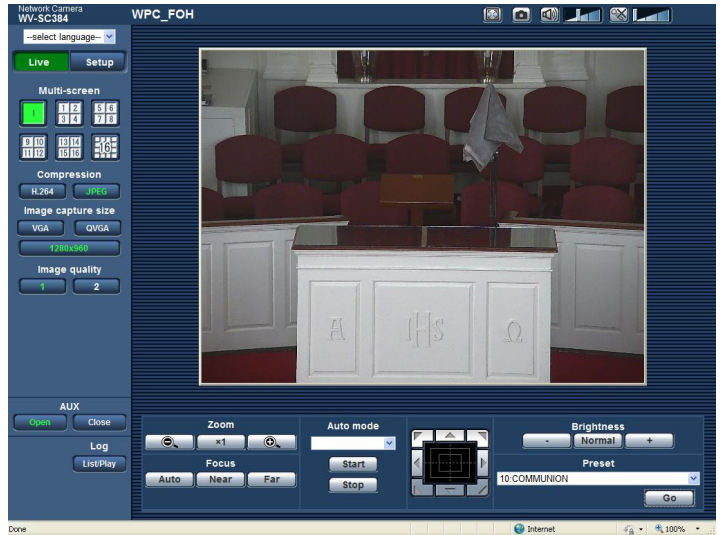
7:CHILDREN STEPS



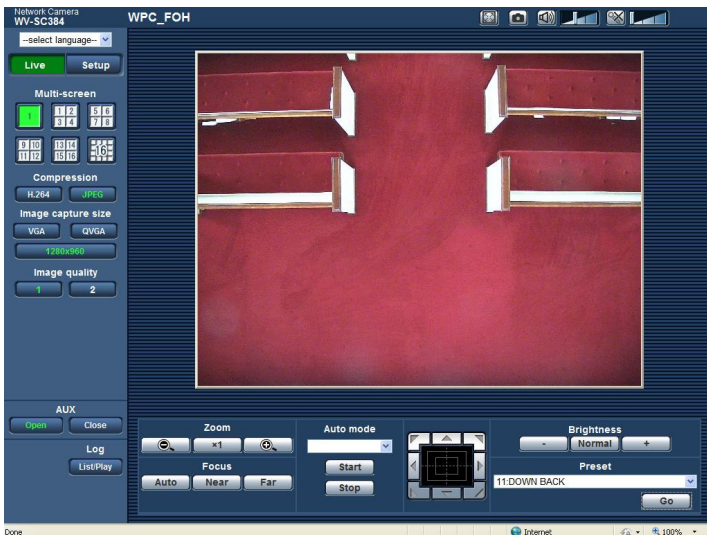
8:BELLS



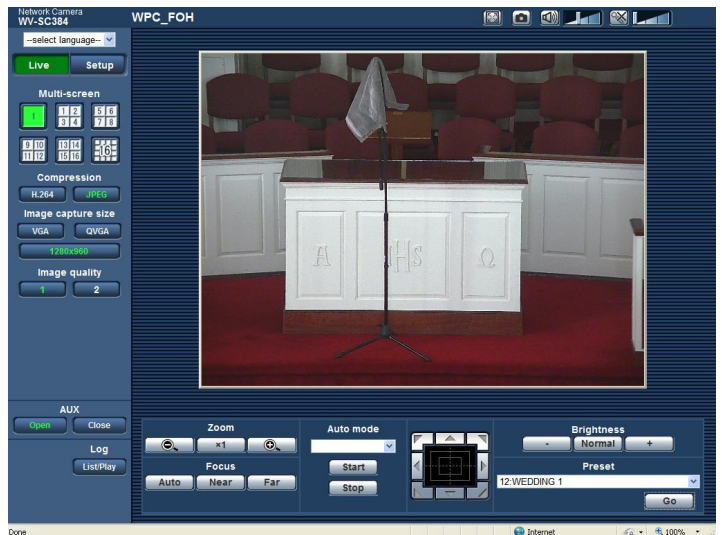
9:PIANO SINGER



10:COMMUNION



11:DOWN BACK



12:WEDDING

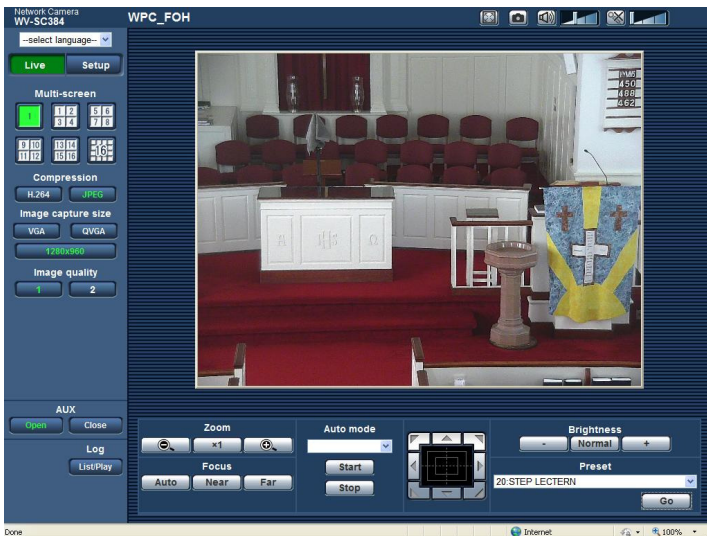
Sanctuary IP Camera defined shots:



13: COMMUNION TIGHT



14: COMMUNION DISTRIBUTI



20: STEP LECTERN